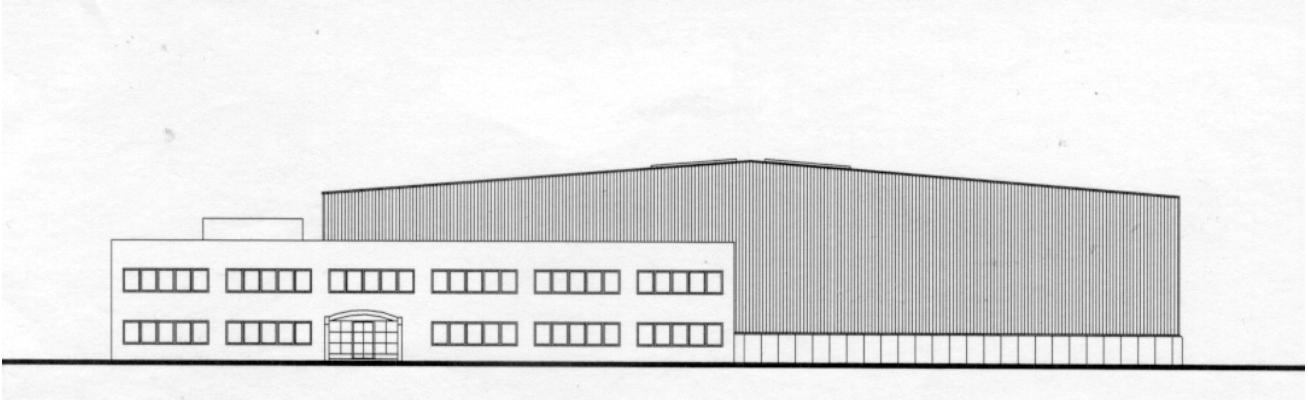


**THE CAR PARTS FACTORY IN THE  
DISTRICT OF SZÉKESFEHÉRVÁR**

---

**Client:**

'Betonútépítő' International Construction Co. Ltd.

**Features:**

Number of levels:

Building of offices and amenities:  
ground floor + first floor

Production hall: single-storey

Covered area: 7 085 m<sup>2</sup>

Overall area: 7 920 m<sup>2</sup>

**Time of design:** 1997-1998

**Services:**

- Architecture
- Technology
- Structural engineering
- Installation engineering
- Electrical engineering
- Telecommunication
- Telemechanics
- Surveying
- Design of road, railway and pavements
- Design of complete network of external public services

The car parts factory was to be constructed in the district of Székesfehérvár town called Szárazréti Iparterület (Industrial Area Szárazrét). At that time, the plot was a vacant piece of land, withdrawn from cultivation. The scope of work included the preparation of designs for the total networks of roads and utility services too.

The production hall was arranged according to the data supplied by the client, with regard to the production engineering requirements. The building has a single-nave, 60 m span steel structure, partly equipped with crane. The perimeter walls and the roof structure consist of heat insulated, fluted sheets with coating. The two-level annex of offices and amenities joins the factory building at the shape of L. Its ground floor is occupied by locker rooms of workers, a warming kitchen in addition to the office of the technical staff directly involved in the supervision of the manufacturing process. The entire second level of the building serves for the accommodation of offices. The office building has a framework of cast-in-place reinforced concrete, with brick walls in-between, and white lime-sand brick finish on them.